

FPG Offers Advanced Sealing Technology

Most Reliable Engine Protection in Small, Two-Stage Air Cleaner

The FPG Air Cleaner series is Donaldson's latest concept in two-stage engine air cleaners operating in medium-heavy dust conditions. The FPG series offers improved reliability and durability with reduced weight and costs.

Ever since Donaldson developed the first air cleaner in 1915, we have worked closely with original equipment manufacturers to provide filtration solutions to meet changing design and specification requirements for diesel engines.

Because they are made of injection molded high-strength plastic, FPG Air Cleaners offer the flexibility to overcome space limitations for underhood air cleaners. Donaldson employs innovative plastic materials and production techniques that result in air cleaners that are corrosion-free and lighter in weight than traditional metal air cleaners – yet without sacrificing sturdiness. Our extensive vibration testing reveals this to be a more durable design than most metal air cleaners.

The filter inside the air cleaner is also quite different from the traditional design: one-piece molded urethane endcaps encase the ends of the media and filter liners, eliminating the metal caps and plastisol potting compound that were traditionally used. The glued-on gasket found on conventional filters is gone – now, the inside surface of the open end is actually the RadialSeal™ sealing surface.



Despite its compact size, the FPG Air Cleaner offers complete engine air protection – removing 99.99+% of the dust and dirt particulate that enters the engine airstream.



FPG Air Cleaners, with RadialSeal™ Sealing Technology, provide thorough two-stage cleaning of incoming engine air on industrial and construction vehicles operating in medium to heavy dust environments.

FPG

for Medium Dust Conditions

Small, Durable, and Corrosion-Free

The World's Easiest-To-Service Air Cleaner!

Applications

- Provides up to 346 cfm airflow per air cleaner – double throughput by using two units
- Installation can be horizontal, vertical, or even at an angle (as long as Vacuator™ Valve points down)
- 4", 5", 6", 7", 8", 9" & 10" diameter sizes
- Temperature tolerance: 180°F / 83°C sustained
(Do not install next to turbocharger, muffler, exhaust pipes, or other high-temp component.)

Ideal for

- Compressors & generator sets
- Construction & in-plant vehicles
- On/Off-Highway vehicles
- Marine & offshore equipment

Air Cleaner Features

- Easy to service! No tools needed! Usually done in 5 minutes or less!
- Durable plastic housing – corrosion-free and lightweight
- Two-stage air filtration! Built-in, tangential pre-cleaner ahead of primary filter removes up to 85% of incoming dust
- Choose 90° or straight outlet to fit your application
- Easy to fasten latches (no bolts!) retain dust cup/cover
- 45° Vacuator™ Valve orientation permits either vertical or horizontal air cleaner mounting (the dust cup can be incrementally rotated to suit specific application)
- Four models have twist-off cover design
- Safety filter protects engine during in-field filter changeouts
- Already tapped to accept filter service indicator (see the Accessories section for indicator options)



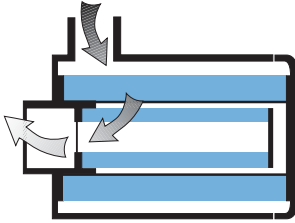
Filter Features

- Exclusive RadialSeal™ Sealing Technology means reliability and easy service – the filter is self-centering and self-aligning!
- One piece, molded urethane endcaps encase the filter media and liners – reducing components, adding reliability and lowering cost



Four models are available with the twist-off cover design.

Airflow pattern "G" Air in the side, out the end.



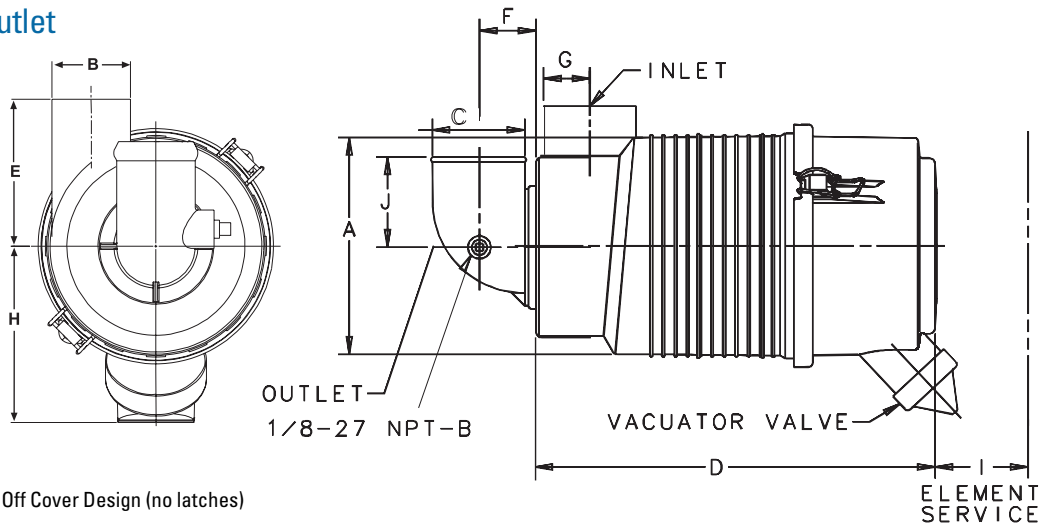
When specifying an FPG Air Cleaner....

Determine the airflow requirements of your engine, then find the corresponding cfm airflow in the table at right. The restriction numbers (shown in inches of water) indicate the approximate initial restriction of each model air cleaner at that cfm. If there are two air cleaner models that fit your parameters, choosing the one with the lowest restriction will provide the longest filter service life. When calculating total initial restriction of the entire air intake system, include the restriction caused by ducting, elbows, pre-cleaners, etc.

Initial Restriction				
Airflow CFM @		-Air Cleaner Model-		
6"H ₂ O	8"H ₂ O	10"H ₂ O	90° Elbow	Straight
Models with Primary Filter Only				
55	65	70	G042545	G042544
80	95	105	G057514	G057513
120	135	155	G065433	G065432
150	170	190	G070020	G070019
205	245	275	G082528	G082527
Models with Primary and Safety Filter				
65	80	90	G057512	G057511
110	125	145	G065411	G065424
125	145	165	G070018	G070017
165	190	215	G082526	G082525
247	282	314	G100317*	
259	297	328		G100319*
265	300	335		G090225*
256	317	346	G090219*	

* Models with Twist-off cover design (no latches)

FPG Specification Illustrations 90° Elbow Outlet

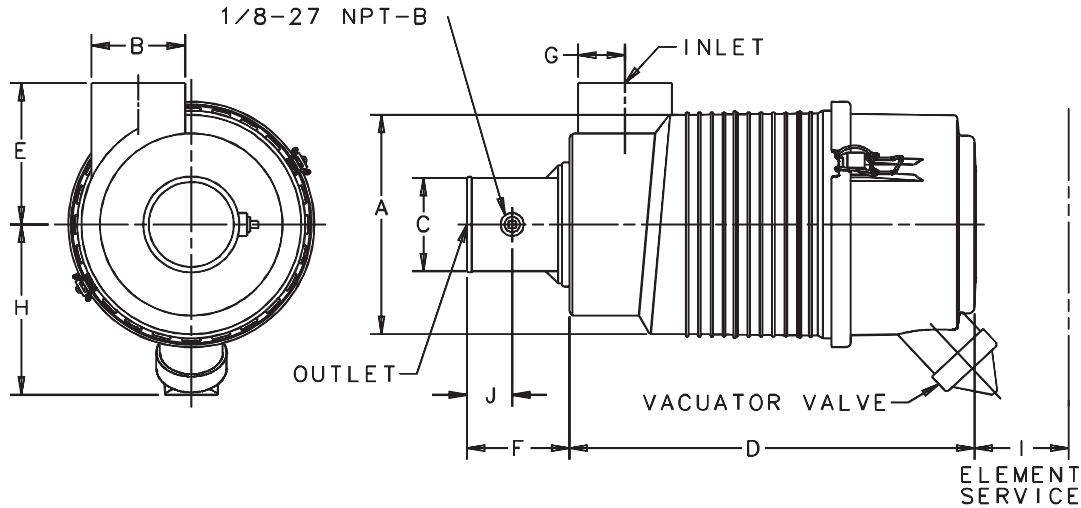


* Models with Twist Off Cover Design (no latches)

FPG Specifications: Models with 90° Elbow Outlet

Air Cleaner Models	with Safety Filter?	Body Dia. (A)	Inlet Dia. (B)	Outlet Dia. (C)	Housing Length (D)	Inlet Height (E)	Outlet Length (F)	Inlet Location (G)	Center Line to Valve (H)	Service Clear. (I)	Weight lbs. kgs.	Restr. Tap Loc. (J)
G042545	no	4.8" 122mm	1.75" 44mm	1.75" 44mm	7.45" 189mm	3.27" 83mm	1.23" 31mm	1.48" 38mm	3.96" 101mm	5.39" 137mm	1.3 lb .6 kg	1.94" 48mm
G057512	yes	5.75" 146mm	2.0" 51mm	2.0" 51mm	10.87" 276mm	3.82" 97mm	1.36" 35mm	1.65" 42mm	4.66" 118mm	10.68" 271mm	2.5 lb 1.1 kg	2.6" 66mm
G057514	no	5.75" 146mm	2.0" 51mm	2.0" 51mm	10.87" 276mm	3.82" 97mm	1.36" 35mm	1.65" 42mm	4.66" 118mm	7.95" 202mm	2.2 lb 1.0 kg	2.6" 66mm
G065411	yes	6.74" 171mm	2.5" 64mm	2.5" 64mm	12.61" 320mm	4.41" 112mm	1.6" 41mm	1.7" 43mm	5.35" 136mm	12.24" 311mm	3.9 lb 1.8 kg	3.06" 78mm
G065433	no	6.74" 171mm	2.5" 64mm	2.5" 64mm	12.61" 320mm	4.41" 112mm	1.6" 41mm	1.7" 43mm	5.35" 136mm	8.5" 216mm	3.5 lb 1.6 kg	3.06" 78mm
G070018	yes	7.19" 183mm	3.0" 76mm	3.0" 76mm	13.09" 332mm	4.88" 124mm	1.88" 48mm	1.72" 44mm	5.45" 137mm	12.5" 318mm	4.3 lb 1.9 kg	3.62" 92mm
G070020	no	7.19" 183mm	3.0" 76mm	3.0" 76mm	13.09" 332mm	4.88" 124mm	1.88" 48mm	1.72" 44mm	5.45" 137mm	8.87" 225mm	3.8 lb 1.7 kg	3.62" 92mm
G082526	yes	8.35" 212mm	3.75" 95mm	3.5" 89mm	14.23" 361mm	5.43" 138mm	2.11" 54mm	2.1" 53mm	6.01" 153mm	13.91" 353mm	5.8 lb 2.6 kg	4.13" 105mm
G082528	no	8.35" 212mm	3.75" 95mm	3.5" 89mm	14.23" 361mm	5.43" 138mm	2.11" 54mm	2.1" 53mm	6.01" 153mm	9.57" 243mm	5.2 lb 2.3 kg	4.13" 105mm
G090219*	yes	9.53" 242mm	4.49" 114mm	3.50" 89mm	15.76" 400mm	6.78" 172mm	2.11" 54mm	2.42" 62mm	10.44" 260mm		8.8 lb 4 kg	4.12" 105mm
G100317*	yes	10.56" 268mm	4.49" 114mm	3.99" 102mm	16.78" 426mm	7.23" 185mm	3.45" 88mm	2.78" 71mm	10.60" 269mm		11.1" 5.05 kg	4.79" 120mm

FPG Specification Illustrations
Straight Outlet Tube Model



FPG Specifications: Models with Straight Outlet Tube

Air Cleaner Models	with Safety Filter?	Body Dia. (A)	Inlet Dia. (B)	Outlet Dia. (C)	Housing Length (D)	Inlet Height (E)	Outlet Length (F)	Inlet Location (G)	Center Line to Valve (H)	Service Clear. (I)	Weight lbs. kgs.	Restr. Tap Loc. (J)
G042544	no	4.8" 122mm	1.75" 44mm	1.75" 44mm	7.45" 189mm	3.27" 83mm	3.24" 82mm	1.48" 38mm	3.96" 101mm	5.39" 137mm	1.3 lb 0.6 kg	1.88" 48mm
G057511	yes	5.75" 146mm	2.0" 51mm	2.0" 51mm	10.87" 276mm	3.82" 97mm	3.25" 83mm	1.65" 42mm	4.66" 118mm	10.68" 271mm	2.5 lb 1.1 kg	1.88" 48mm
G057513	no	5.75" 146mm	2.0" 51mm	2.0" 51mm	10.87" 276mm	3.82" 97mm	3.25" 83mm	1.65" 42mm	4.66" 118mm	7.95" 202mm	2.2 lb 1.0 kg	1.88" 48mm
G065424	yes	6.74" 171mm	2.5" 64mm	2.5" 64mm	12.61" 320mm	4.41" 112mm	3.23" 82mm	1.7" 43mm	5.35" 136mm	12.24" 311mm	3.9 lb 1.8 kg	1.63" 41mm
G065432	no	6.74" 171mm	2.5" 64mm	2.5" 64mm	12.61" 320mm	4.41" 112mm	3.23" 82mm	1.7" 43mm	5.35" 136mm	8.48" 216mm	3.5 lb 1.6 kg	1.63" 41mm
G070017	yes	7.19" 183mm	3.0" 76mm	3.0" 76mm	13.09" 332mm	4.88" 124mm	3.26" 83mm	1.72" 44mm	5.45" 138mm	12.5" 318mm	4.3 lb 1.9 kg	1.88" 48mm
G070019	no	7.19" 183mm	3.0" 76mm	3.0" 76mm	13.09" 332mm	4.88" 124mm	3.26" 83mm	1.72" 44mm	5.45" 138mm	8.87" 225mm	3.8 lb 1.7 kg	1.88" 48mm
G082525	yes	8.35" 212mm	3.75" 95mm	3.5" 89mm	14.23" 361mm	5.43" 138mm	3.27" 83mm	2.1" 53mm	6.01" 153mm	13.91" 353mm	5.8 lb 2.6 kg	1.91" 49mm
G082527	no	8.35" 212mm	3.75" 95mm	3.5" 89mm	14.23" 361mm	5.43" 138mm	3.27" 83mm	2.1" 53mm	6.01" 153mm	9.57" 243mm	5.2 lb 2.3 kg	1.91" 49mm
G090225*	yes	9.53" 242mm	4.49" 114mm	3.99" 102mm	15.76" 400mm	6.78" 172mm	3.43" 87mm	2.42" 62mm	10.44" 260mm		8.7 lb 3.95 kg	n/a
G100319*	yes	10.56" 268mm	4.49" 114mm	3.99" 102mm	16.78" 426mm	7.23" 185mm	3.45" 88mm	2.78" 71mm	10.60" 269mm		10.9" 4.95 kg	n/a

* Models with Twist Off Cover Design (no latches)

Application Notes

- Safety filters:** All FPG models can accept safety filters. This table shows which air cleaner models are shipped with a safety filter installed. If you want to add a safety filter to an existing model that did not originally have one, order the safety filter listed in the Service Parts table on page 34.
- Mounting band** specifications and ordering information are on next page.
- Inlet Hoods:** A plastic inlet stack up to 18" (457mm) tall may be added, supporting a plastic inlet hood. See the Accessories section for information on optional inlet hoods and filter service indicators. **Warning:** Do not add a pre-cleaner or any intake accessory other than a lightweight inlet hood. Use of unapproved intake accessories will void your Donaldson warranty.
- Service Indicators.** See the Accessories section for information on filter service indicators.

Mounting Bands Designed Exclusively for the FPG

Available in Polymer and Metal

Donaldson offers two styles of mounting bands specially designed for FPG Air Cleaners: (1) metal with a bolt and (2) high tech polymer.

Polymer Mounting Band

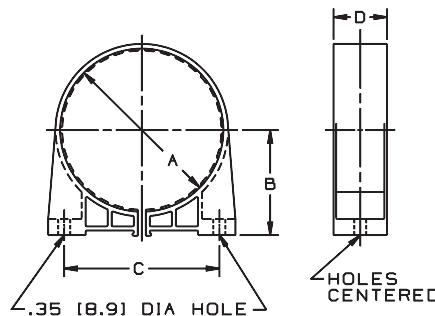
The one-piece, high tech polymer mounting band will securely hold the housing in position.

The band has tabs on the inside circumference which fit exactly into notches on the FPG housing.

The band tightens around the air cleaner when the base of the band is bolted to a support, providing a fixed, stable mounting – even in high vibration applications.

Donaldson polymer bands are completely non-corrosive, lightweight, easy to install, and economical.

WARNING: Do not use any other mounting bands or straps with FPG Air Cleaners. Use of an unapproved mounting band voids warranty.



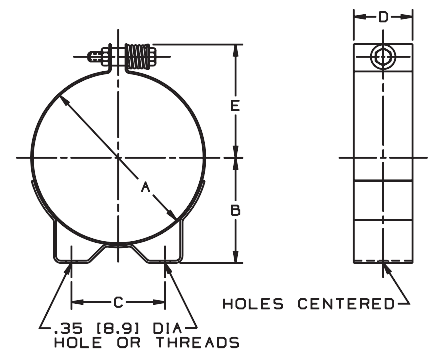
Application Note:

To accommodate even hard-to-fit applications, polymer bands allow the air cleaner housings to be rotated and positioned at various increments, depending upon the size:

Housing Diameter	Degree of Increment
4.8" (122mm)	11°
5.75" (146mm)	10°
6.74" (171mm)	7.5°
7.19" (183mm)	7°
8.35" (212mm)	5°

Metal Mounting Band

The metal mounting band has a spring-loaded bolt at the top to maintain a constant hold on the housing throughout high and low temperature extremes.



FPG Mounting Bands (Order one band per FPG air cleaner)

Part Number	A		B		C		D		E		Weight		Maximum Bolt Torque	
	in	mm	in	mm	in	mm	in	mm	in	mm	lbs	gms	lbs.-ft.	N•m
Polymer Bands														
P777151	4.80	122	3.09	79	4.56	116	1.57	40	n/a		0.26	118	11 lbs.-ft.	14.8 N•m
P777730	5.75	146	3.52	90	5.35	136	1.99	51	n/a		0.37	167	11 lbs.-ft.	14.8 N•m
P778810	6.79	173	3.94	100	6.00	154	1.99	51	n/a		0.40	182	11 lbs.-ft.	14.8 N•m
P777731	7.17	182	4.11	105	6.50	165	1.99	51	n/a		0.45	206	11 lbs.-ft.	14.8 N•m
P777732	8.35	212	4.70	120	7.48	190	1.99	51	n/a		0.56	253	11 lbs.-ft.	14.8 N•m
P780532*	9.48	241	5.47	136	5.63	143	1.99	51						
P780594*	10.55	268	5.90	150	5.63	143	3.15	80						
Metal Bands														
H008442	4.80	122	3.07	78	2.76	70	1.57	40	3.34	85	0.70	317	12 lbs.-ft.	16.2 N•m
H008443	5.75	146	3.54	90	3.15	80	1.99	51	3.83	85	1.30	590	12 lbs.-ft.	16.2 N•m
H008441*	6.79	173	3.94	100	3.54	90	1.99	51	4.35	111	1.40	635	12 lbs.-ft.	16.2 N•m
H008444	6.79	173	3.94	100	3.54	90	1.99	51	4.35	111	1.40	635	12 lbs.-ft.	16.2 N•m
H002070	7.19	183	4.09	104	3.74	95	1.99	51	4.55	116	1.50	680	12 lbs.-ft.	16.2 N•m
H002023	8.13	207	4.72	120	4.33	110	1.99	51	5.14	97	1.60	726	12 lbs.-ft.	16.2 N•m

*Mounting bands (with spring-loaded screws) for FPG09 and FPG10 models with twist-off cover. ** Model H008441 has 8mm threads.

FPG

for Medium Dust Conditions

FPG Service Parts



G070019 (straight outlet)	
G070020 (90° elbow outlet)	
cover	P536202 8
filter, primary	P827653 3
filter, safety	P829332 4
latch	P538928
Vacuator™ Valve	P158914

G082525 (straight outlet)	
G082526 (90° elbow outlet)	
cover	P534048 8
filter, primary	P828889 3
filter, safety	P829333 3
latch	P538928
Vacuator™ Valve	P158914

G082527 (straight outlet)	
G082528 (90° elbow outlet)	
cover	P534048 8
filter, primary	P828889 3
filter, safety	P829333 4
latch	P538928
Vacuator™ Valve	P158914

G090219* (90° elbow outlet)	
G090225* (straight outlet)	
filter, primary	P780522
filter, safety	P780523
Vacuator™ Valve	P776008

G100317* (90° elbow outlet)	
G100319* (straight outlet)	
filter, primary	P781039
filter, safety	P777639
Vacuator™ Valve	P776008

* Models with Twist Off Cover Design (no latches)

G042544 (straight outlet)	
G042545 (90° elbow outlet)	
cover	P533685 8
filter, primary	P822686 3
filter, safety	P535396 4
latch	P538928
Vacuator™ Valve	P522958

G057511 (straight outlet)	
G057512 (90° elbow outlet)	
cover	P533761 8
filter, primary	P821575 3
filter, safety	P822858 3
latch	P538928
Vacuator™ Valve	P522958

G057513 (straight outlet)	
G057514 (90° elbow outlet)	
cover	P533761 8
filter, primary	P821575 3
filter, safety	P822858 4
latch	P538928
Vacuator™ Valve	P522958

G065411 (90° elbow outlet)	
G065424 (straight outlet)	
cover	P539422 8
filter, primary	P822768 3
filter, safety	P822769 3
latch	P538928
Vacuator™ Valve	P158914

G065432 (straight outlet)	
G065433 (90° elbow outlet)	
cover	P539422 8
filter, primary	P822768 3
filter, safety	P822769 4
latch	P538928
Vacuator™ Valve	P158914

G070017 (straight outlet)	
G070018 (90° elbow outlet)	
cover	P536202 8
filter, primary	P827653 3
filter, safety	P829332 3
latch	P538928
Vacuator™ Valve	P158914

NOTES:

- 3 = Shipped with air cleaner initially
- 4 = Safety filter is designed to fit this air cleaner, but was not originally shipped with it (note that adding a safety filter will decrease the maximum airflow throughput)
- 8 = Cover assembly includes latches but no Vacuator™ Valve